



POPPET VALVE SERIES





Valve Specifications	
Type :	3/2
Design :	Internal Pilot Operated Poppet Valve
Port Size :	In / Out / Exhaust - 1/4" BSP
Media :	Compressed Air (Filtered & Lubricated)
working Pressure Range :	2-10 Bar
Orifice :	7mm
Ambient / Media Temperature :	5°C - 60°C
Materials of Construction :	Aluminium, Nitrile, Brass, Polymer

Coil Specification

Operating Voltage :	24V AC	110V AC	230V AC	12V DC	24V DC
Power Consumption :	9W	9W	9W	10W	11W
Coil Features :	High Reliability Unaffected by Voltage Surges. Easy coil changes coil lockable in 4X90 position or freely movable in between as require.				
Coil Housing :	Epoxy square coil, Metallic round enclosure, IP-67 Flameproof Junction box, IP-68 Weatherproof enclosure.				

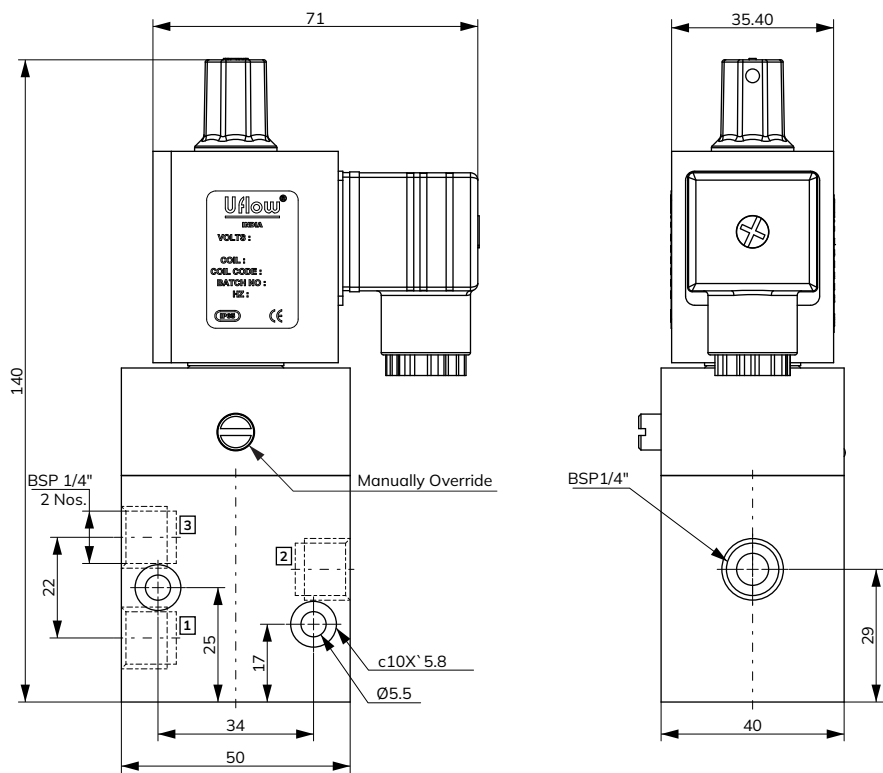
Port Connection

1 - Input, 2/4 - Output, 3/5 - Exhaust			
Model No.	Coil Type	Function	Symbol
CSA1BN23ET070V0	AC	Single Solenoid Spring Return (NC)	
CSA1BN23FT070V0	DC		

Features

- ☒ Fast response time 1000 cycle/min
- ☒ Manual override
- ☒ 2 Million cycle tested
- ☒ Lubrication not essential

Dimension Drawing (All dimensions in mm)





Valve Specifications

Type :	5/2
Design :	Internal Pilot Operated Poppet Valve
Port Size :	In / Out / Exhaust - 1/4" BSP
Media :	Compressed Air (Filtered & Lubricated)
working Pressure Range :	2-10 Bar
Orifice :	7mm
Ambient / Media Temperature :	5°C - 60°C
Materials of Construction :	Aluminium, Nitrile, Brass, Polymer

Coil Specification

Operating Voltage :

Power Consumption :

Coil Features :

Coil Housing :

24V AC	110V AC	230V AC	12V DC	24V DC
9W	9W	9W	10W	11W

High Reliability Unaffected by Voltage Surges. Easy coil changes coil lockable in 4X90 position or freely movable in between as require.

Epoxy square coil, Metallic round enclosure, IP-67 Flameproof enclosure, IP-68 Weatherproof enclosure.

Port Connection

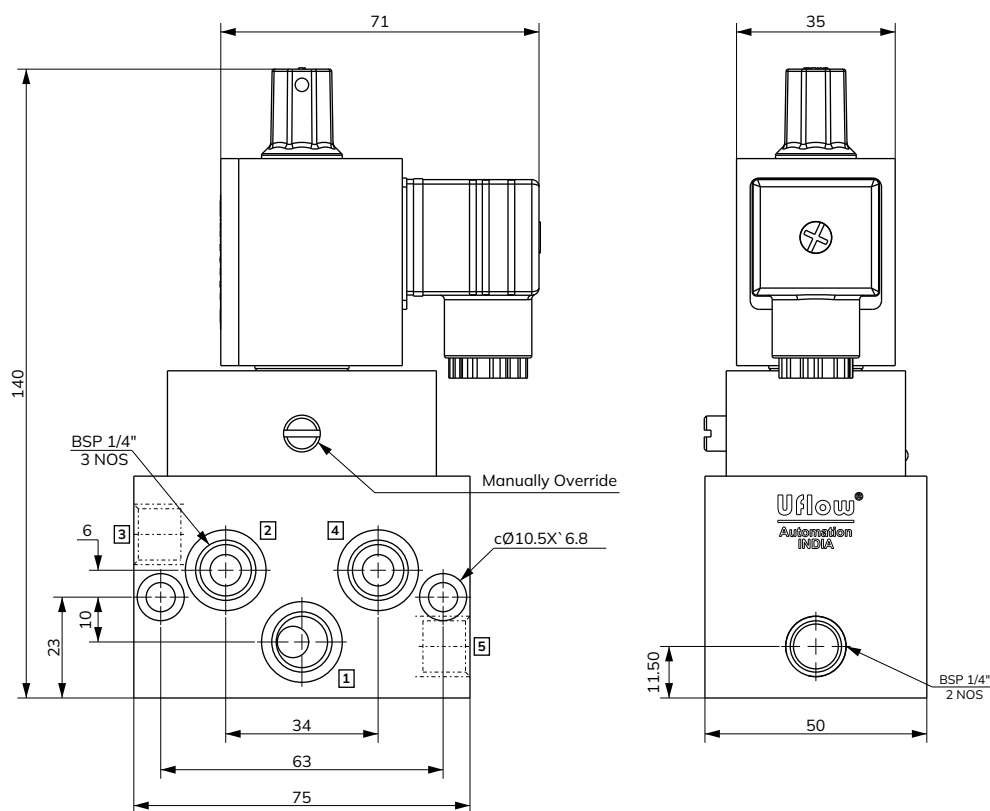
1 - Input, 2/4 - Output, 3/5 - Exhaust

Model No.	Coil Type	Function	Symbol
CFA1BN23ET070V0	AC	Single Solenoid Spring Return	
CFA1BN23FT070V0	DC		

Features

- ☒ Fast response time 1000 cycle/min
- ☒ Manual override
- ☒ 2 Million cycle tested
- ☒ Lubrication not essential

Dimension Drawing (All dimensions in mm)





Valve Specifications

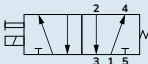
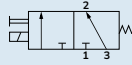
Type :	3/2 - 5/2
Design :	Internal Pilot Operated Poppet Valve
Port Size :	In / Out / Exhaust - ¼" BSP
Media :	Compressed Air (Filtered & Lubricated)
working Pressure Range :	2-10 Bar
Orifice :	7mm
Ambient / Media Temperature :	5°C - 60°C
Materials of Construction :	Aluminium, Nitrile, Brass, Polymer

Coil Specification

Operating Voltage :	24V AC	110V AC	230V AC	12V DC	24V DC
Power Consumption :	9W	9W	9W	10W	11W
Coil Features :	High Reliability Unaffected by Voltage Surges. Easy coil changes coil lockable in 4X90 position or freely movable in between as require.				
Coil Housing :	Epoxy square coil, Metallic round enclosure, IP-67 Flameproof enclosure, IP-68 Weatherproof enclosure.				

Port Connection

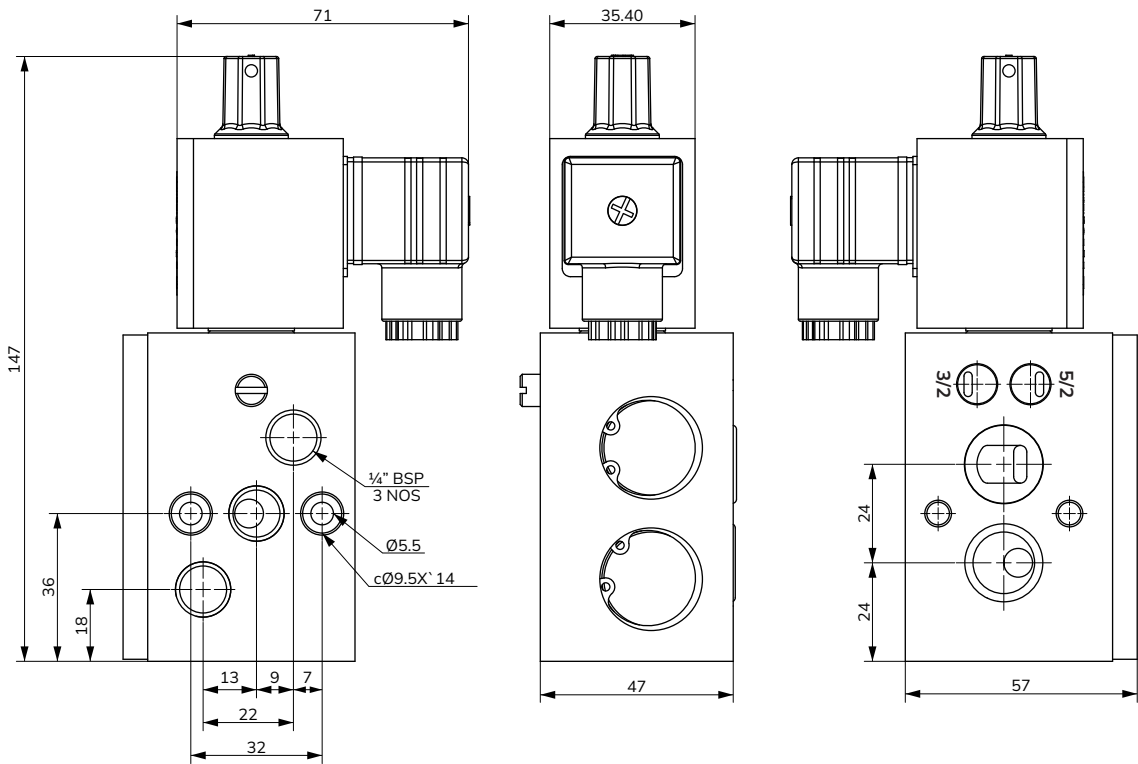
1 - Input, 2/4 - Output, 3/5 - Exhaust

Model No.	Coil Type	Function	Symbol
CCA1RN23ET070V0	AC	Single Solenoid Spring Return	 5X2
CCA1RN23FT070V0	DC		 3X2

Features

- ☒ Fast response time 1000 cycle/min
- ☒ Manual override
- ☒ 2 Million cycle tested
- ☒ Lubrication not essential

Dimension Drawing (All dimensions in mm)





Valve Specifications

Type :	5/2
Design :	Internal Pilot Operated Poppet Valve
Port Size :	In / Out / Exhaust - 1/4" BSP
Media :	Compressed Air (Filtered & Lubricated)
working Pressure Range :	2-10 Bar
Orifice :	7mm
Ambient / Media Temperature :	5°C - 60°C
Materials of Construction :	Aluminium, Nitrile, Brass, Polymer

Coil Specification

Operating Voltage :

Power Consumption :

Coil Features :

Coil Housing :

24V AC	110V AC	230V AC	12V DC	24V DC
9W	9W	9W	10W	11W

High Reliability Unaffected by Voltage Surges. Easy coil changes coil lockable in 4X90 position or freely movable in between as require.

Epoxy square coil, Metallic round enclosure, IP-67 Flameproof enclosure, IP-68 Weatherproof enclosure.

Port Connection

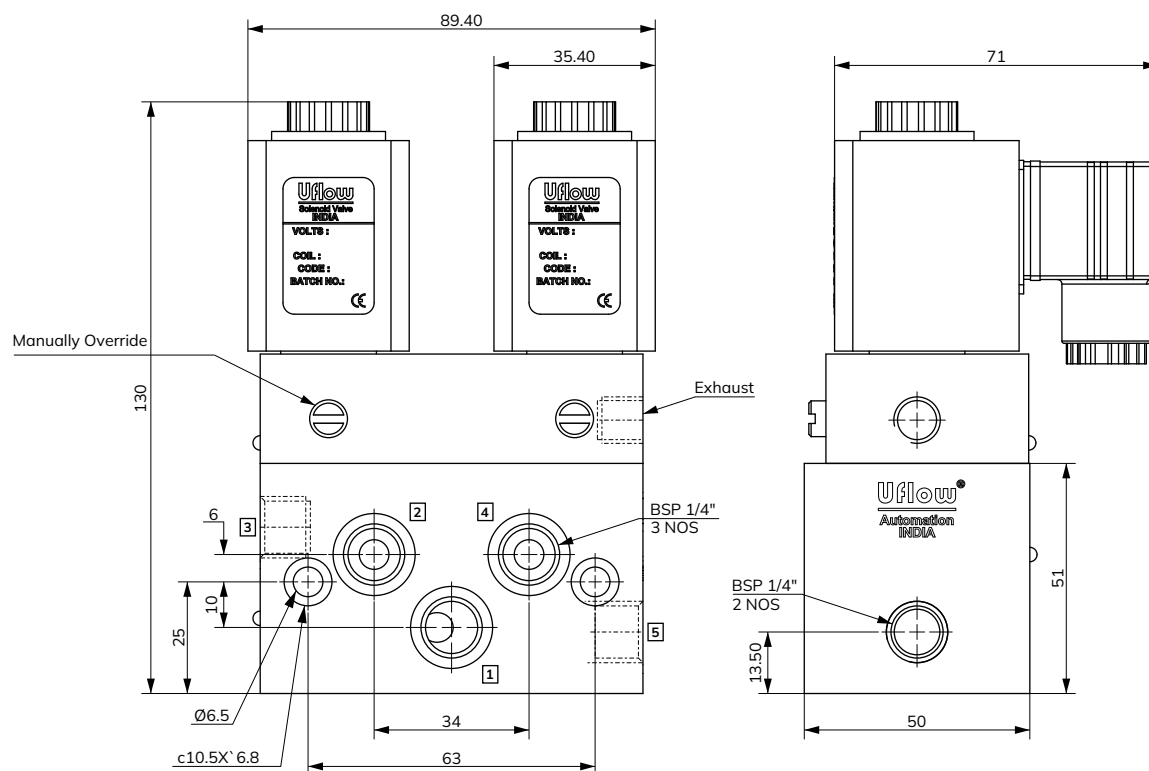
1 - Input, 2/4 - Output, 3/5 - Exhaust

Model No.	Coil Type	Function	Symbol
CDA1BN23EP060V0	AC	Single Solenoid Spring Return	
CDA1BN23FP060V0	DC		

Features

- ☒ Fast response time 1000 cycle/min
- ☒ Manual override
- ☒ 2 Million cycle tested
- ☒ Lubrication not essential

Dimension Drawing (All dimensions in mm)





Valve Specifications

Type :	3/2
Design :	Internal Pilot Operated Poppet Valve
Port Size :	In / Out / Exhaust - ½" BSP
Media :	Compressed Air (Filtered & Lubricated)
working Pressure Range :	2-10 Bar
Orifice :	16mm
Ambient / Media Temperature :	5°C - 60°C
Materials of Construction :	Aluminium, Nitrile, Brass, Polymer

Coil Specification

Operating Voltage :	24V AC	110V AC	230V AC	12V DC	24V DC
Power Consumption :	9W	9W	9W	10W	11W
Coil Features :	High Reliability Unaffected by Voltage Surges. Easy coil changes coil lockable in 4X90 position or freely movable in between as require.				
Coil Housing :	Epoxy square coil, Metallic round enclosure, IP-67 Flameproof enclosure, IP-68 Weatherproof enclosure.				

Port Connection

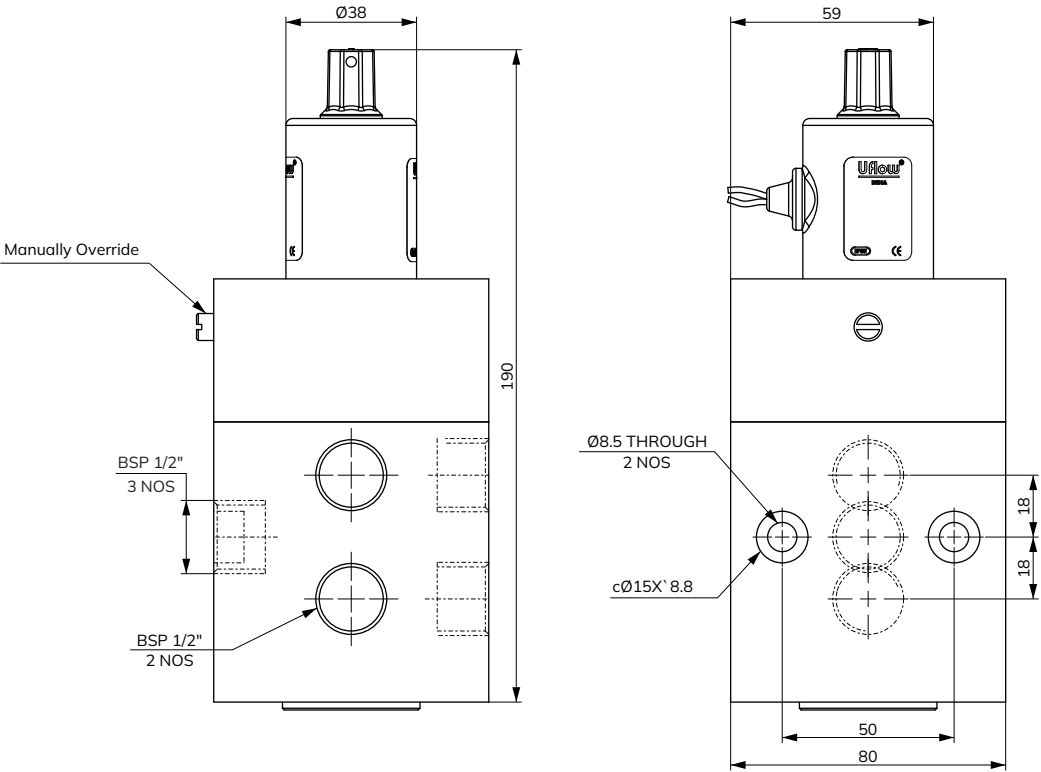
1 - Input, 2/4 - Output, 3/5 - Exhaust

Model No.	Coil Type	Function	Symbol
CSA2BN23ET160V0	AC	Single Solenoid	
CSA2BN23FT160V0	DC		

Features

- ☒ Fast response time 1000 cycle/min
- ☒ Manual override
- ☒ 2 Million cycle tested
- ☒ Lubrication not essential

Dimension Drawing (All dimensions in mm)





Valve Specifications

Type :	3 Way
Design :	3 Way Direct Acting Poppet Type
Port Size :	In / Out / Exhaust - 1/4" BSP
Media :	Compressed Air (Filtered & Lubricated)
working Pressure Range :	2-10 Bar
Orifice :	7mm
Ambient / Media Temperature :	5°C - 60°C
Materials of Construction :	Aluminium, Nitrile, Brass, Polymer

Coil Specification

Operating Voltage :

Power Consumption :

Coil Features :

Coil Housing :

24V AC	110V AC	230V AC	12V DC	24V DC
9W	9W	9W	10W	11W

High Reliability Unaffected by Voltage Surges. Easy coil changes coil lockable in 4X90 position or freely movable in between as require.

Epoxy square coil, Metallic round enclosure, IP-67 Flameproof enclosure, IP-68 Weatherproof enclosure.

Port Connection

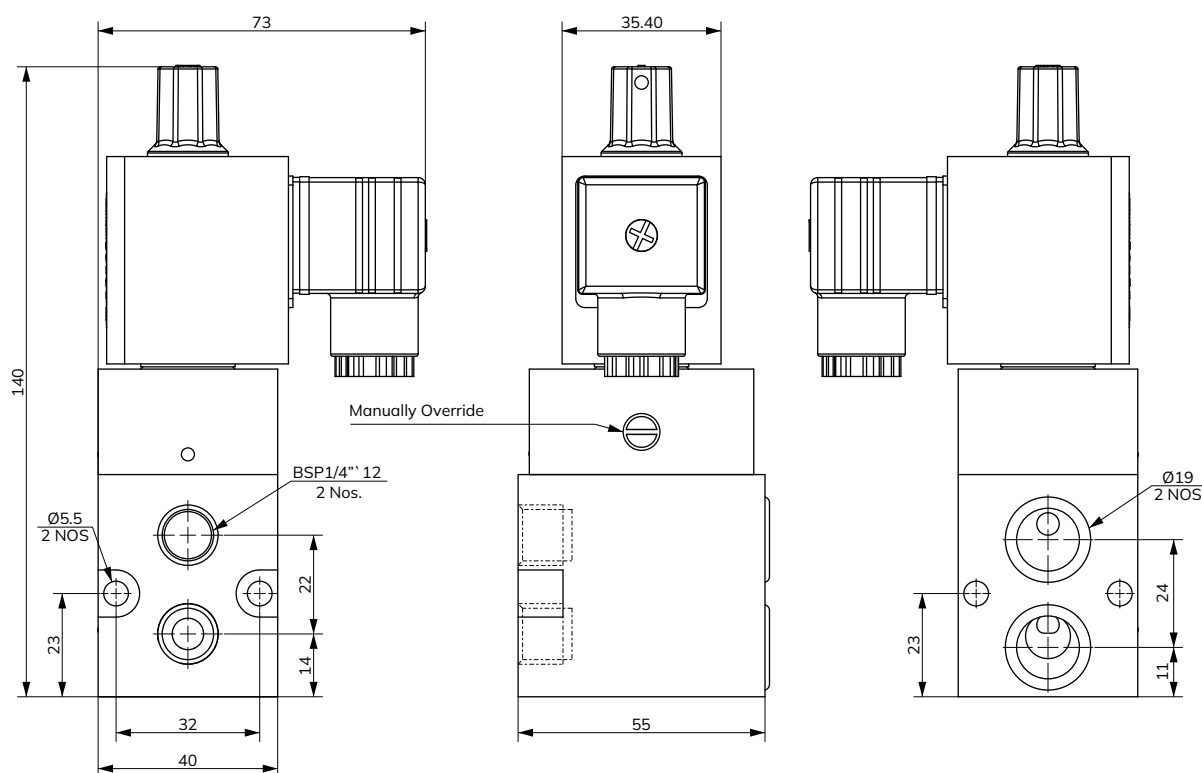
1 - Input, 2/4 - Output, 3/5 - Exhaust

Model No.	Coil Type	Function	Symbol
CSA1RN23ET070V0	AC	Single Solenoid Spring Return	
CSA1RN23FT070V0	DC		

Features

- ☒ Fast response time 1000 cycle/min
- ☒ Manual override
- ☒ 2 Million cycle tested
- ☒ Lubrication not essential

Dimension Drawing (All dimensions in mm)





Valve Specifications

Type :	3 Way
Design :	3 Way Direct Acting Poppet Type
Port Size :	In / Out / Exhaust - ½" BSP
Media :	Compressed Air (Filtered & Lubricated)
working Pressure Range :	0-10 Bar
Orifice :	5mm
Ambient / Media Temperature :	5°C - 60°C
Materials of Construction :	Aluminium, Nitrile, Brass, Polymer

Coil Specification

Operating Voltage :	24V AC	110V AC	230V AC	24V DC
Power Consumption :	9W	9W	9W	11W
Coil Features :	High Reliability Unaffected by Voltage Surges. Easy coil changes coil lockable in 4X90 position or freely movable in between as require.			
Coil Housing :	Epoxy square coil, Metallic round enclosure, IP-67 Flameproof enclosure, IP-68 Weatherproof enclosure.			

Port Connection

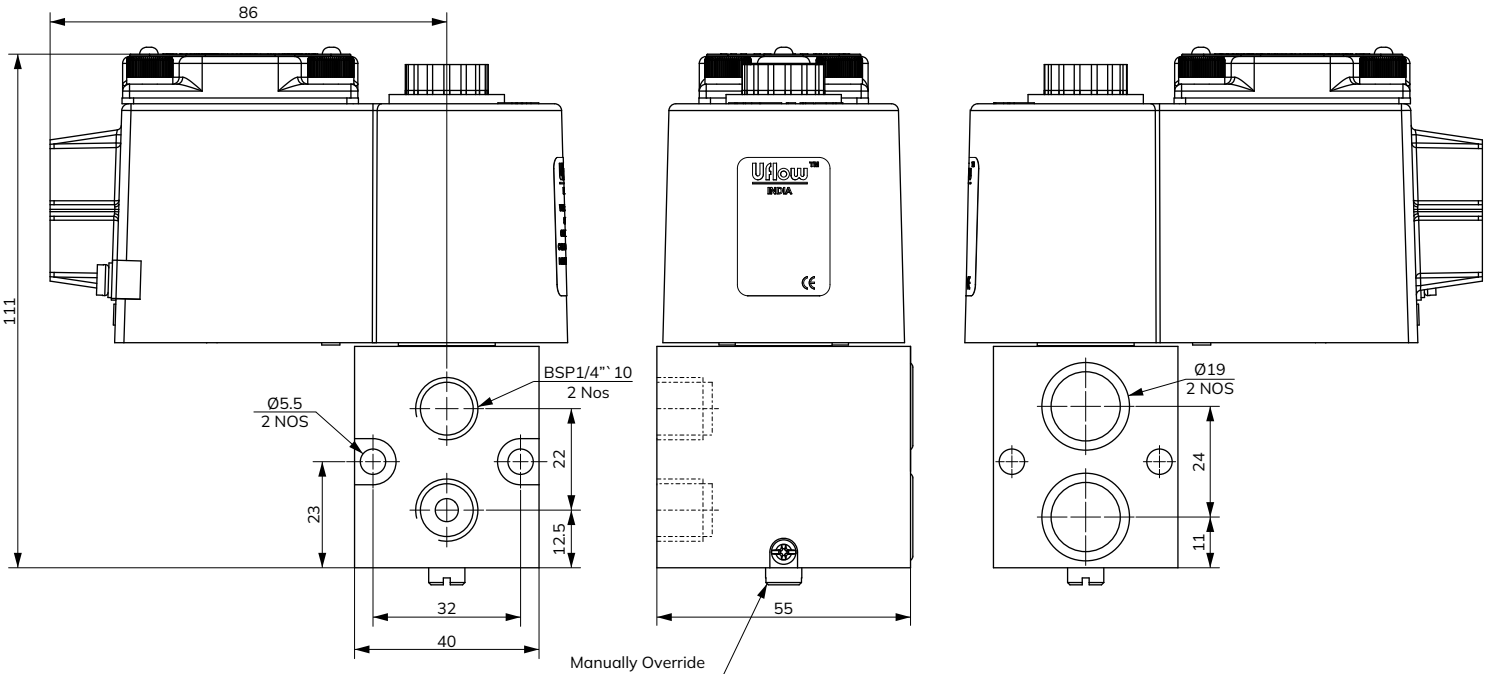
1 - Input, 2/4 - Output, 3/5 - Exhaust

Model No.	Coil Type	Function	Symbol
TAN104RNGT050V0	AC	Single Solenoid Spring Return	
TAN104RNHT050V0	DC		

Features

- ☒ Fast response time 1000 cycle/min
- ☒ Manual override
- ☒ 2 Million cycle tested
- ☒ Lubrication not essential

Dimension Drawing (All dimensions in mm)





Valve Specifications

Type :	3 Way
Design :	3 Way Direct Acting Poppet Type
Port Size :	In / Out / Exhaust - 1/4" BSP
Media :	Compressed Air (Filtered & Lubricated)
working Pressure Range :	0-10 Bar
Orifice :	10mm
Ambient / Media Temperature :	5°C - 60°C
Materials of Construction :	Aluminium, Nitrile, Brass, Polymer

Coil Specification

Operating Voltage :

Power Consumption :

Coil Features :

Coil Housing :

24V AC	110V AC	230V AC	12V DC	24V DC
9W	9W	9W	10W	11W

High Reliability Unaffected by Voltage Surges. Easy coil changes coil lockable in 4X90 position or freely movable in between as require.

Epoxy square coil, Metallic round enclosure, IP-67 Flameproof enclosure, IP-68 Weatherproof enclosure.

Port Connection

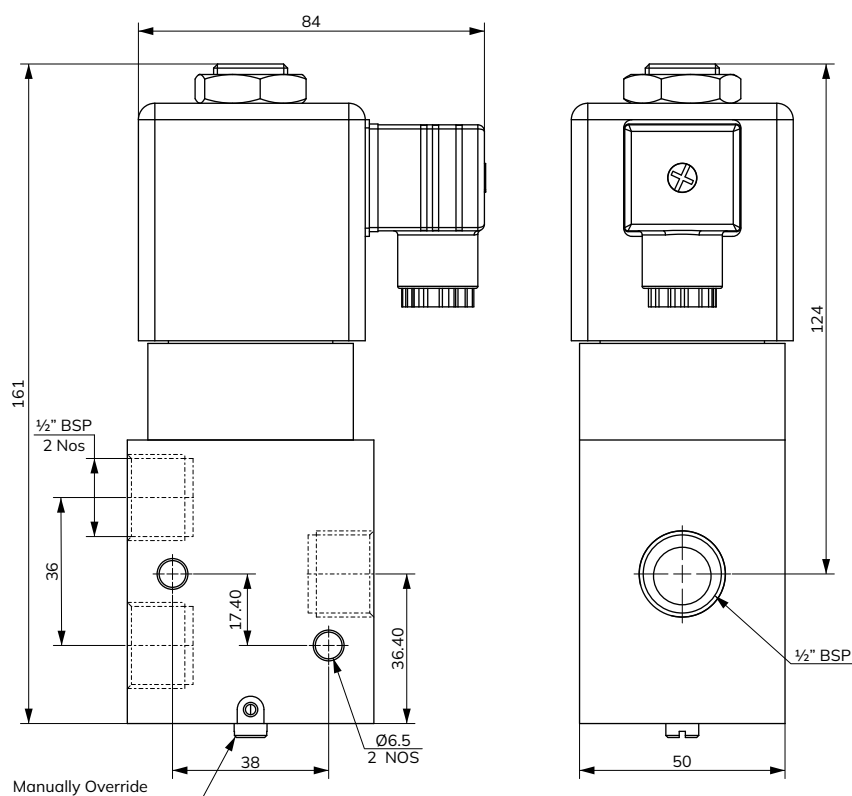
1 - Input, 2/4 - Output, 3/5 - Exhaust

Model No.	Coil Type	Function	Symbol
TAN204BNIT100V0	AC	Single Solenoid Spring Return	
TAN204BNJT100V0	DC		

Features

- ☒ Fast response time 1000 cycle/min
- ☒ Manual override
- ☒ 2 Million cycle tested
- ☒ Lubrication not essential

Dimension Drawing (All dimensions in mm)





Valve Specifications

Type :	3 Way
Design :	3 Way Direct Acting Poppet Type
Port Size :	In / Out / Exhaust - ¼" BSP
Media :	Compressed Air (Filtered & Lubricated)
working Pressure Range :	0-10 Bar
Orifice :	5mm
Ambient / Media Temperature :	5°C - 60°C
Materials of Construction :	Aluminium, Nitrile, Brass, Polymer

Coil Specification

Operating Voltage :	24V AC	110V AC	230V AC	24V DC
Power Consumption :	9W	9W	9W	11W
Coil Features :	High Reliability Unaffected by Voltage Surges. Easy coil changes coil lockable in 4X90 position or freely movable in between as require.			
Coil Housing :	Epoxy square coil, Metallic round enclosure, IP-67 Flameproof enclosure, IP-68 Weatherproof enclosure.			

Port Connection

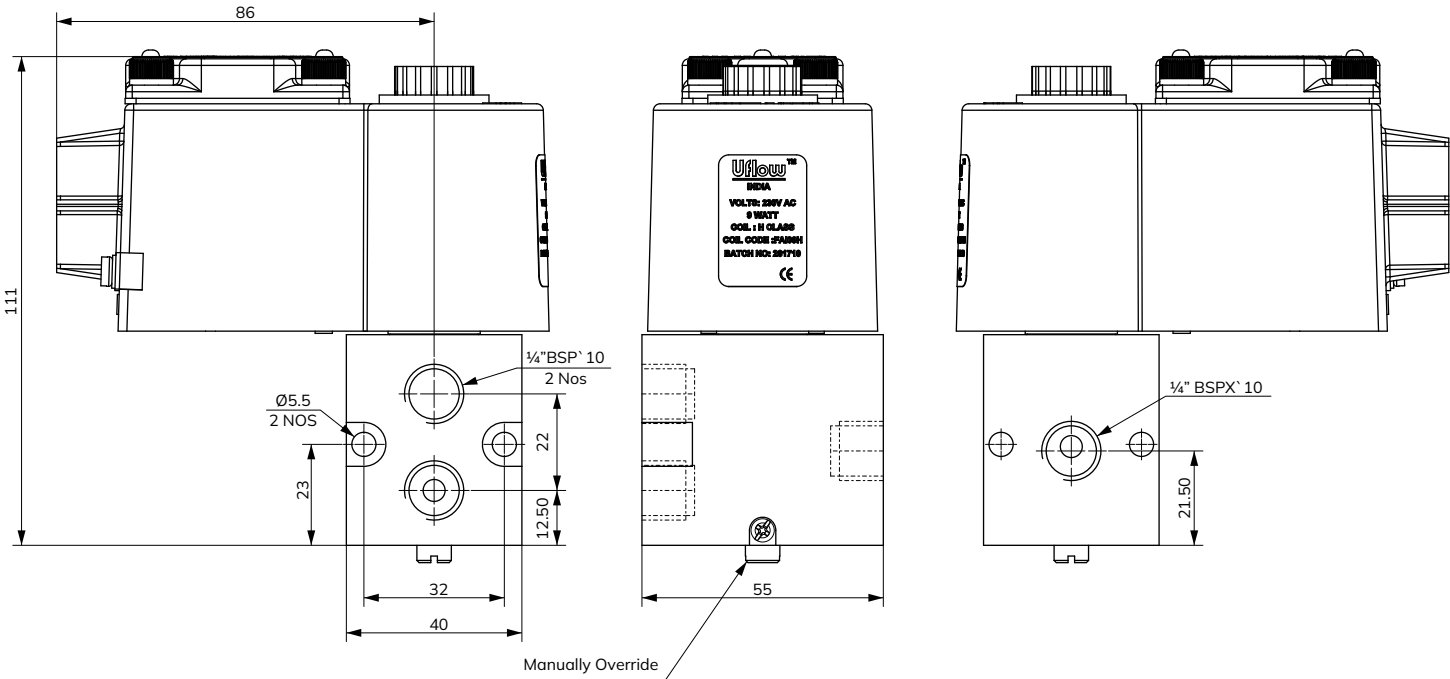
1 - Input, 2/4 - Output, 3/5 - Exhaust

Model No.	Coil Type	Function	Symbol
TAN104BUGT050V0	AC	Single Solenoid Spring Return	
TAN104BUHT050V0	DC		

Features

- ✓ Fast response time 1000 cycle/min
- ✓ Manual override
- ✓ 2 Million cycle tested
- ✓ Lubrication not essential
- ✓ Universal Type (NO/NC)

Dimension Drawing (All dimensions in mm)



DC SOLENOID VALVE MODEL IDENTIFICATION CHART

C	F	A	1	B	N	23	E	T	060	-	V0
---	---	---	---	---	---	----	---	---	-----	---	----

PRODUCT TYPE		BODY MATERIAL		PORT SIZE		PORT CONNECTION		PRESSURE RANGE		FEATURES		ORIFICE IN MM		CONFIGURATION		VERSION	
C	DC Poppet Valve	A	Aluminium	1	¼"	B	BSP	04	0-10 Bar	W	W/O MOR	060	6	BLANK	REGULAR	V0	VERSION 0
				2	½"	N	NPT	22	1-10 Bar	M	TURN MOR	120	12	C1	CONFIG 1	V1	VERSION 1
						P	BSPT	23	2-10 Bar	P	PUSH MOR	070	7	C2	CONFIG 2	V2	VERSION 2
						R	NAMUR BSP	24	2-20 Bar	T	PUSH & TURN MOR	050	5	C3	CONFIG 3	V3	VERSION 3
						T	NAMUR NPT	25	3-40 Bar			080	8	⋮	⋮	⋮	⋮
								29	1-3 Bar			085	8.5	C9	CONFIG 9	V9	VERSION 9
														CA	CONFIG 10	VA	VERSION 10
														CB	CONFIG 11	VB	VERSION 11

PORT POSITION & TYPE	
T	3X2 NO SINGLE SOLENOID
S	3X2 NC SINGLE SOLENOID
F	5X2 SINGLE SOLENOID
D	5X2 DOUBLE SOLENOID
B	5X3 CENTER BLOCKED
E	5X3 CENTER EXHAUSTED
P	5X3 CENTER PRESSURERISED
A	4X2 SINGLE SOLENOID
U	4X2 DOUBLE SOLENOID
C	3X2 & 5X2 SINGLE SOLENOID CONVERTIBLE

SEAL MATERIAL	
N	Nitrile
E	EPDM
V	VITON
S	SILICONE

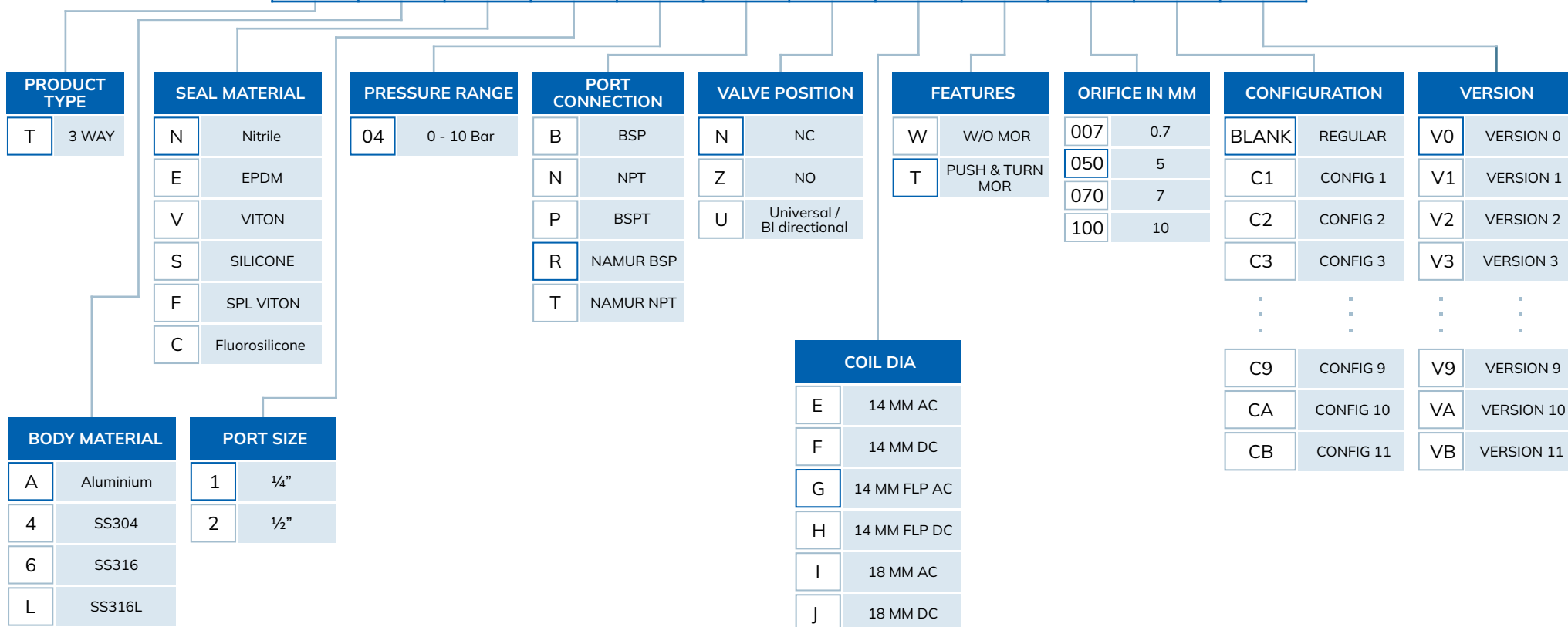
COIL DIA	
E	14MM AC
F	14MM DC
G	14MM FLP AC
H	14MM FLP DC
I	18MM AC
J	18MM DC

CFA1BN23ET060V0

1/4" 5X2 SINGLE SOLENOID DC POPPET TYPE VALVE ALUMINIUM - BSP - NITRILE - 2 TO 10 Bar-14MM AC - PUSH & TURN MOR - 6MM ORIFICE

3 WAY DIRECT ACTING POPPET TYPE VALVE MODEL IDENTIFICATION CHART

T A N 1 04 R N G T 050 - V0



TAN104BNGW007V0

1/4" 3 WAY DIRECT ACTING Aluminium-Nitrile-0 TO 10bar-Namur BSP-NC-14mm FLP AC-Push & Turn Mor -5 mm ORIFICE

Scribble Note....

Handwriting practice area with 20 sets of dashed lines for tracing on a light gray background.

Our Clients



Global Presence...



Made In India



CONTACT US:

✉ sales@uflowvalve.com 📞 +91 89059 07070 📠 +91-2827-254343 🌐 www.uflowvalve.com

📍 Uflow Automation, Ankur Industrial Complex, Sur vey No: 275/276, Plot No: 31, Nr. Intol Cast Pvt. Ltd. Shapar(Veraval) Dist.: Gujarat (India) - 360 024.