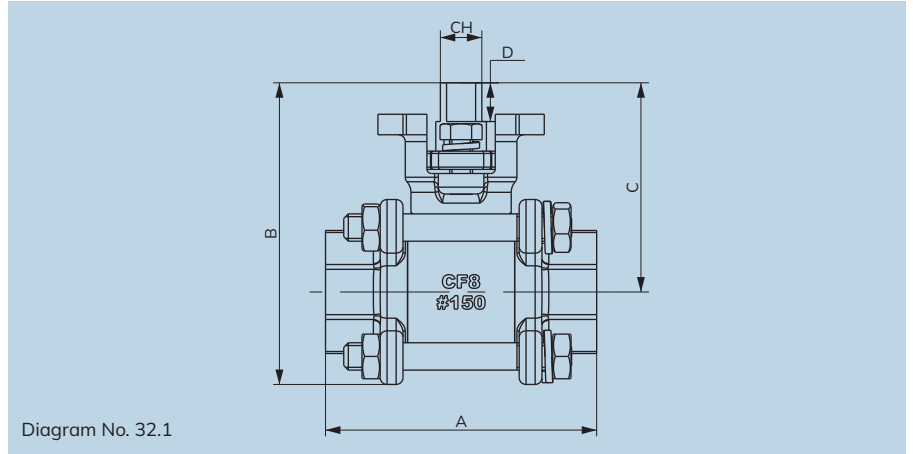




**BALL VALVE**  
SERIES



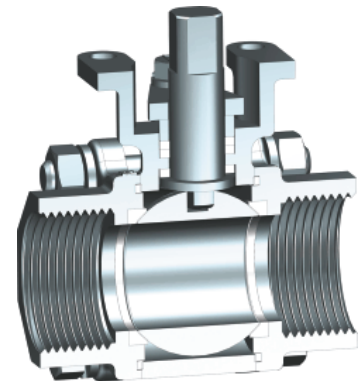
**Specifications**

<b>End Connection :</b>	Screwed end, Socket Weld
<b>Size :</b>	DN15 - DN100
<b>Face to Face :</b>	MFG. Standard
<b>Design Standard :</b>	ASME B16.11, ASME B16.34, API 598, BS EN ISO 17292, ISO 5211
<b>Pressure Class :</b>	150#
<b>Body Material :</b>	CF8 / CF8M / WCB / CF3M
<b>Pipe End Material :</b>	CF8 / CF8M / WCB / CF3M
<b>Ball Material :</b>	CF8 / CF8M
<b>Body Seal Material :</b>	PTFE / RPTFE / CFT / GFT / PEEK
<b>Seat Ring Material :</b>	PTFE / RPTFE / CFT / GFT / PEEK
<b>Fastener Material :</b>	SS304 / SS316
<b>Stem Seal Material :</b>	PTFE / RPTFE / CFT / GFT / PEEK
<b>Stem Material :</b>	SS304 / SS316 / SS410
<b>Gland Bush Material :</b>	SS304 / SS316 / SS410
<b>Gland Material :</b>	SS304 / SS316 / SS410

**Features**

- 3PC design twinseal ball valve.
- Full port ball valve.
- Blow out proof stem.
- Floating ball design.
- Hand Lever / Gear / Actuator Operated.
- Face to Face:- MFG standard.
- End Connection:- Screwed / Socket weld (ASME B16.11).
- Balls are precision machined and mirror finished for bubble-tight shut off with less operating torque.
- ISO 5211 top mounting pad available for easy Uflow make actuator mounting.

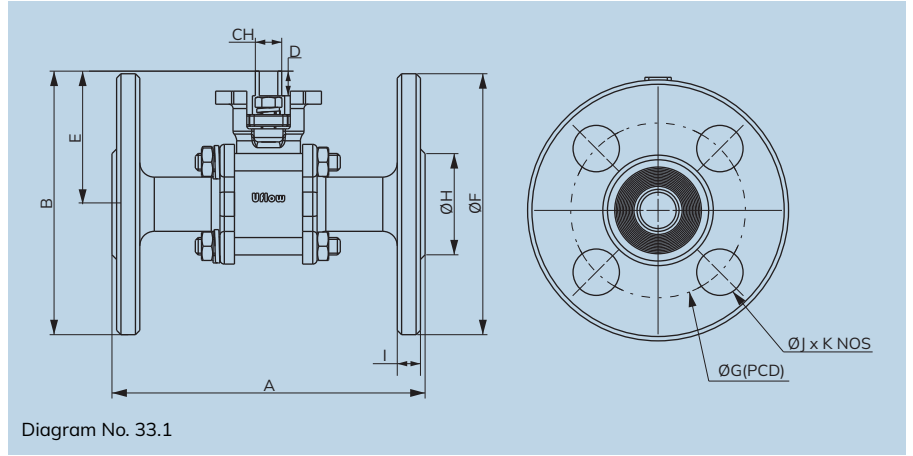
**Section View**



All dimensions are approx.

**Dimension** (All dimensions in mm)

Model No.	Diagram No.	Pipe (Inch)	A	B	CH	D	C	ISO 5211
BCPC2ABFBV0	32.1	½"	59.50	66	9.1	8.5	46	F03
BCPC3ABFBV0	32.1	¾"	57	71	9.1	8.5	50	F03
BCPC4ABFBV0	32.1	1"	75.70	90	11	13.5	61.5	F05
BCPC5ABFBV0	32.1	1¼"	85	102.7	10	13	70	F05
BCPC6ABFBV0	32.1	1½"	93.60	110	11	13	73.5	F05
BCPC8ABFBV0	32.1	2"	109	139.6	14	13	83	F05
BCPC9ABFBV0	32.1	2½"	139	173	14	15	108.5	F07
BCPCAABFBV0	32.1	3"	166	199	17	20.5	123.5	F07
BCPCBABFBV0	32.1	4"	193	236	22	21.5	143	F07



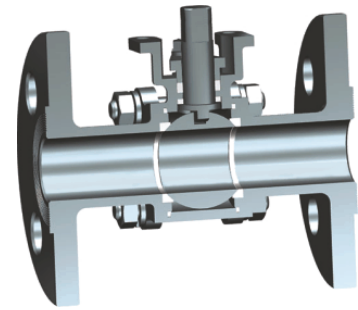
## Specifications

<b>End Connection :</b>	Flange end, Butt weld
<b>Face to Face :</b>	ASME B 16.10 (Flange end)
<b>Pressure Class :</b>	150#
<b>Design Standard :</b>	ASME B16.10, ASME B16.25, ASME B16.34, ASME B16.5, API 598, BS EN ISO 17292, ISO 5211
<b>Body Material :</b>	CF8 / CF8M / WCB / CF3M
<b>Tail Piece Material :</b>	CF8 / CF8M / WCB / CF3M
<b>Ball Material :</b>	CF8 / CF8M
<b>Body Seal Material :</b>	PTFE / RPTFE / CFT / GFT / PEEK
<b>Seat Ring Material :</b>	PTFE / RPTFE / CFT / GFT / PEEK
<b>Fastener Material :</b>	SS304 / SS316
<b>Stem Seal Material :</b>	PTFE / RPTFE / CFT / GFT / PEEK
<b>Stem Material :</b>	SS304 / SS316 / SS410
<b>Gland Bush Material :</b>	SS304 / SS316 / SS410
<b>Gland Material :</b>	SS304 / SS316 / SS410

## Features

- 3PC design twinseal ball valve.
- Full port ball valve.
- Blow out proof stem.
- Floating ball design.
- Hand Lever / Gear / Actuator Operated.
- Face to Face:- ASME B16.10.
- End Connection:- Flanged (ASME B16.5), Butt-weld (ASME B16.25)
- Balls are precision machined and mirror finished for bubble-tight shut off with less operating torque.
- ISO 5211 top mounting pad available for easy Uflow make actuator mounting.

## Section View



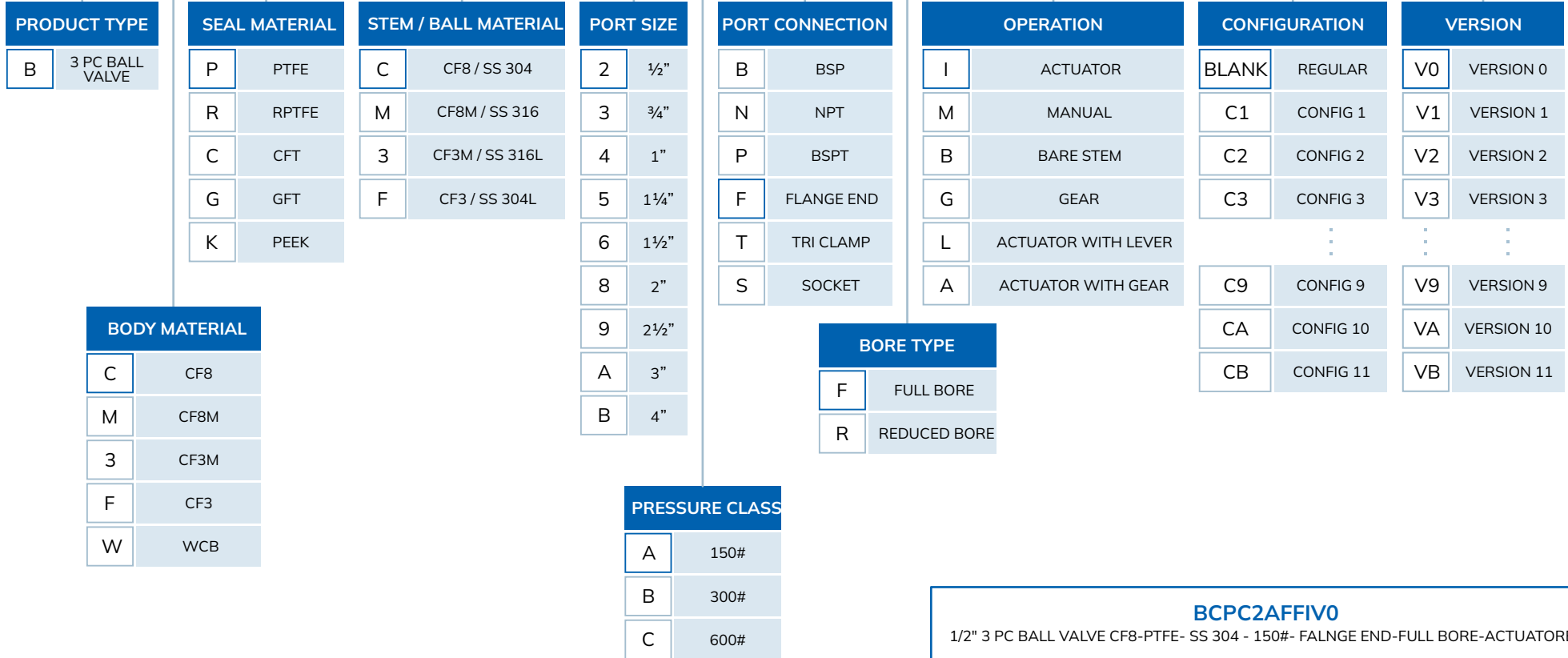
## Dimension (All dimensions in mm)

All dimensions are approx.

Model No.	Diagram No.	Pipe (Inch)	A	B	CH	D	E	F	G	H	I	J	K	ISO 5211
BCPC2AFFBV0	33.1	½"	108	91	9.1	8.5	46	90	60.5	35	8	16	4	F03
BCPC3AFFBV0	33.1	¾"	117	100	9.1	9	50	100	70	44.5	9	16	4	F03
BCPC4AFFBV0	33.1	1"	127	117	11	13.5	61.5	110	79.5	51	9.6	16	4	F05
BCPC5AFFBV0	33.1	1¼"	140	127	10	13	70	115	89	68	11.2	16	4	F05
BCPC6AFFBV0	33.1	1½"	165	136	11	13	73.5	125	98.5	73	12.5	16	4	F05
BCPC8AFFBV0	33.1	2"	178	169	14	15.5	94	150	121	92	14.5	19	4	F05
BCPC9AFFBV0	33.1	2½"	190	198.5	14	15	108.5	180	139.5	105	16	19.5	4	F07
BCPCAFFBV0	33.1	3"	203	214.5	17	16.5	119.5	190	152.5	127	17.5	19.5	4	F07
BCPCBAFFBV0	33.1	4"	229	259	22	23	144	230	190.5	157	22.5	19	8	F07

# BALL VALVE MODEL IDENTIFICATION CHART

B C P C 2 A F F I - V0



Scribble Note....

A series of horizontal dashed lines for writing, spaced evenly down the page.

## Our Clients





# Global Presence...



Made In India



## CONTACT US:

✉ [sales@uflowvalve.com](mailto:sales@uflowvalve.com) 📞 +91 89059 07070 📠 +91-2827-254343 🌐 [www.uflowvalve.com](http://www.uflowvalve.com)

📍 Uflow Automation, Ankur Industrial Complex, Sur vey No: 275/276, Plot No: 31, Nr. Intol Cast Pvt. Ltd. Shapar( Veraval) Dist.: Gujarat (India) - 360 024.